

13405 Pulver Pl

20'
Equestrian
easement to
Seneca
Creek State
Park
(Overgrowth)

20'
Equestrian
easement

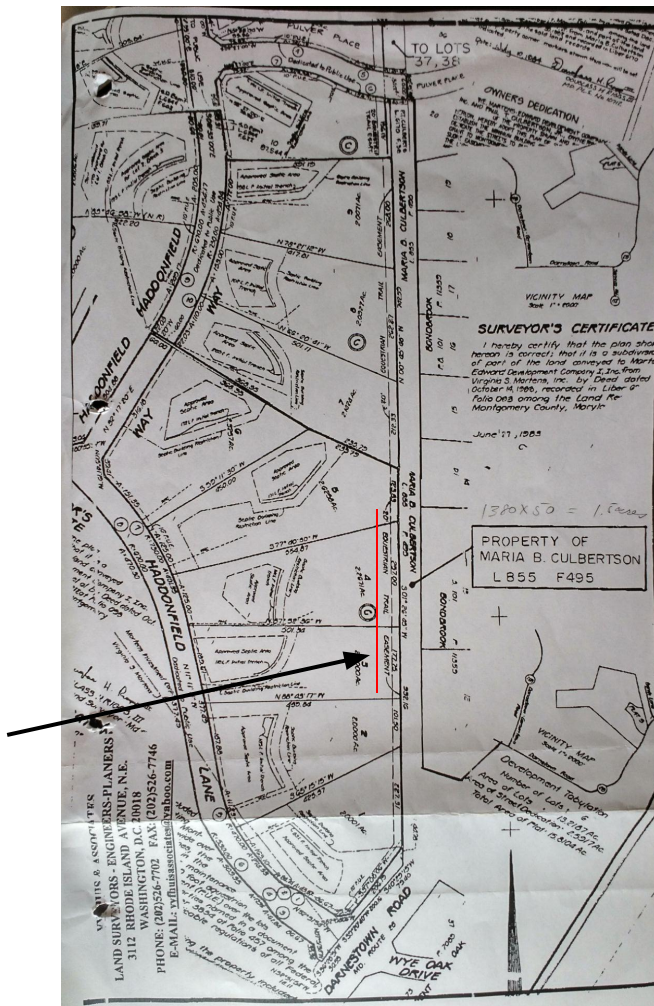
13415 Darnestown Rd

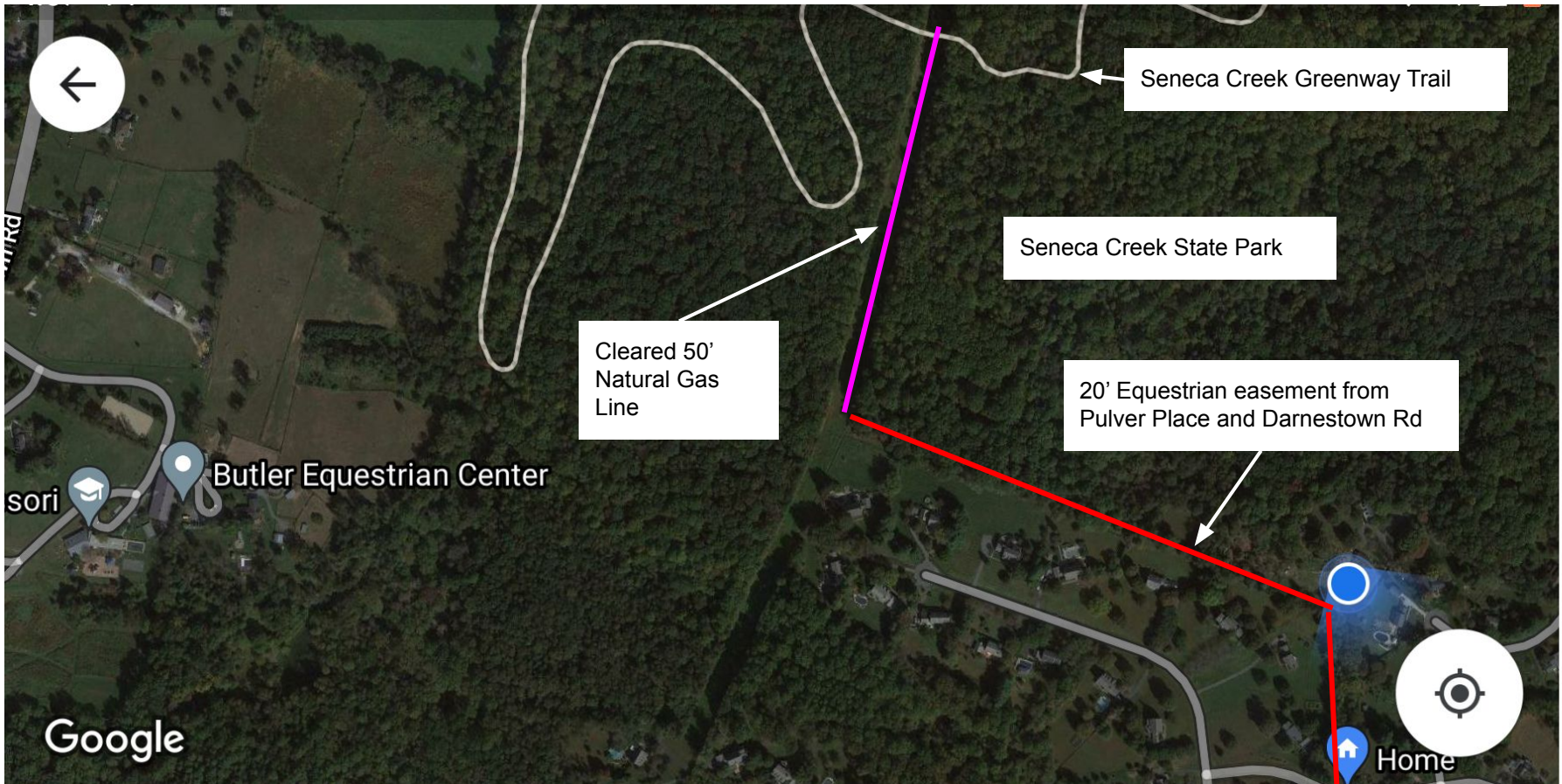
28



Ground level
view of 20'
Equestrian
Trail
easement to
Seneca
Creek State
Park
(Overgrowth)

20'
"Equestrian
Trail"
easement
documented
on plat for
13415
Darnestown
Rd





Seneca Creek Greenway Trail

Seneca Creek State Park

Cleared 50'
Natural Gas
Line

20' Equestrian easement from
Pulver Place and Darnestown Rd

sori
Butler Equestrian Center

Google



Home

